

## Backup and Restore Files

### Contents

1. Preconditions .....	2
2. How to backup files .....	3
2.1. Choose target folder .....	3
2.2. Select files and folders to backup at source drive.....	3
2.3. Start backup process.....	3
3. How to restore files from backup copy .....	3
3.1. Choose destination folder.....	3
3.2. Select files to restore on source drive.....	3
3.3. Запустить процесс восстановления .....	3

## 1. Preconditions

This reference relies on your knowledge acquired after reading EBCD user guide volume “*Introduction to File Manager*” ([http://www.primexpert.com/ebcd/user\\_guide/ebcd\\_file\\_intro.pdf](http://www.primexpert.com/ebcd/user_guide/ebcd_file_intro.pdf))

It is expected that you know how to navigate in file system, change drive in file manager panels and select files and folders.

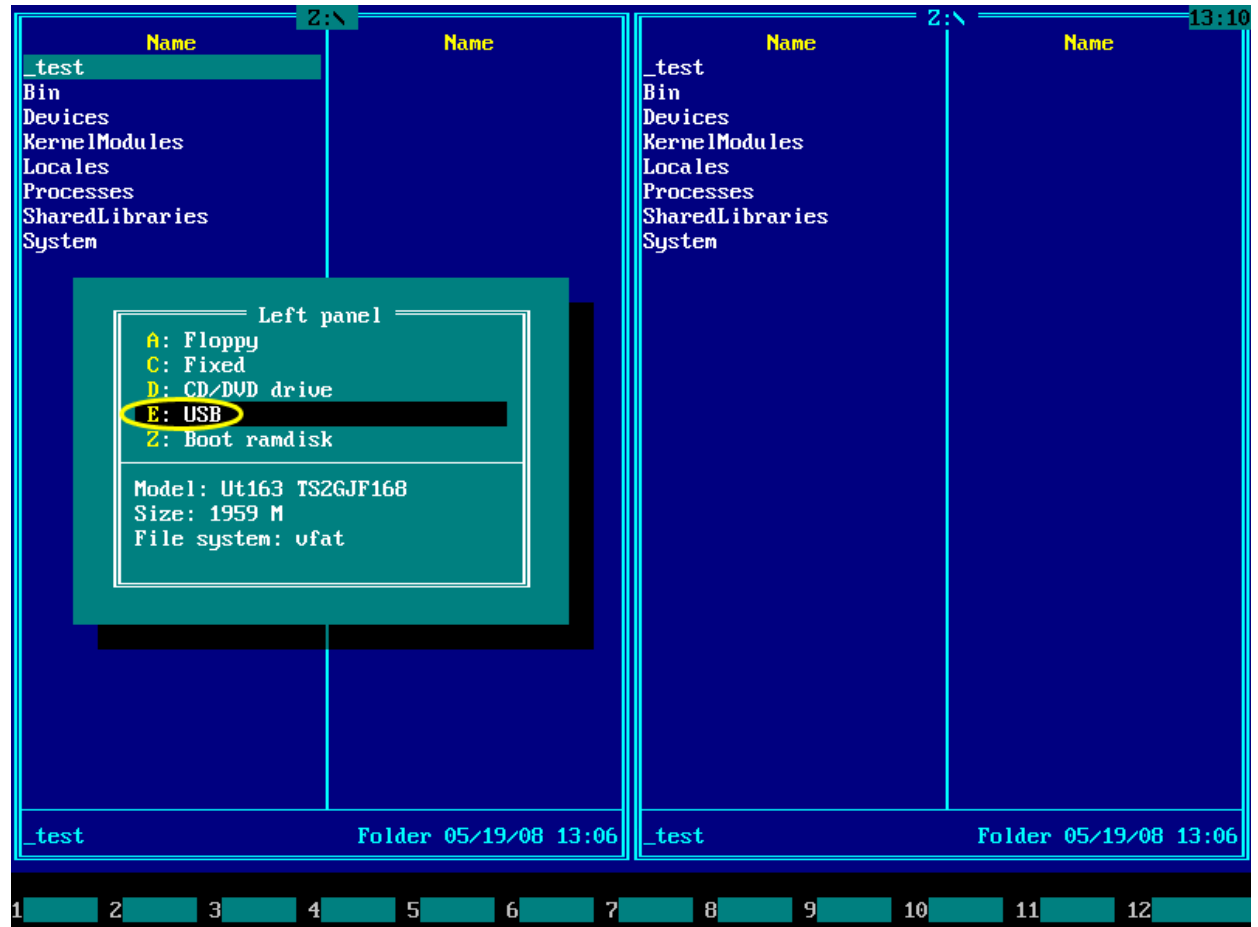
## 2. How to backup files

### 2.1. Choose target folder

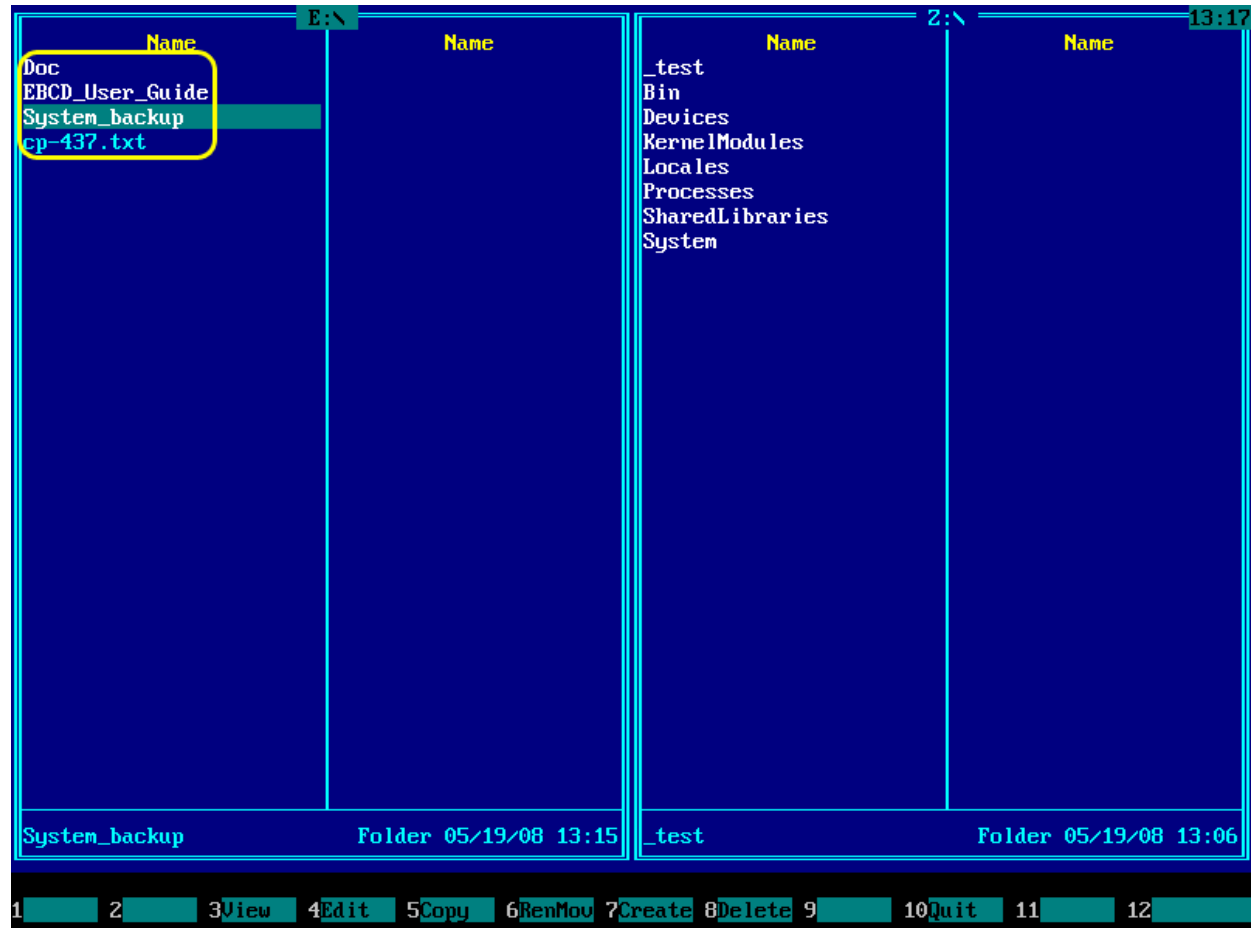
Open the drive you are going to backup to, in the one of file manager panels. To do this, press **Alt+F1** key.

For more information on this topic refer to EBCD user guide volume “Introduction to file manager” ([http://www.primexpert.com/ebcd/user\\_guide/ebcd\\_file\\_intro.pdf](http://www.primexpert.com/ebcd/user_guide/ebcd_file_intro.pdf)).

In popup window choose desired drive using ↑ and ↓ keys, then **Enter** or by clicking it. Screenshot shows choosing of drive E: (USB flash).



Left panel should display contents of chosen drive. In this example, it shows contents of drive E:.



If target folder already exists, enter into it in file manager. If this folder is non-empty, delete its contents or use some other folder for backup.

If backup drive does not yet contain target folder, you may create it.

More details about folder creation can be found in EBCD user guide volume “*Introduction to File Manager*” ([http://www.prime-expert.com/ebcd/user\\_guide/ebcd\\_file\\_intro.pdf](http://www.prime-expert.com/ebcd/user_guide/ebcd_file_intro.pdf)).

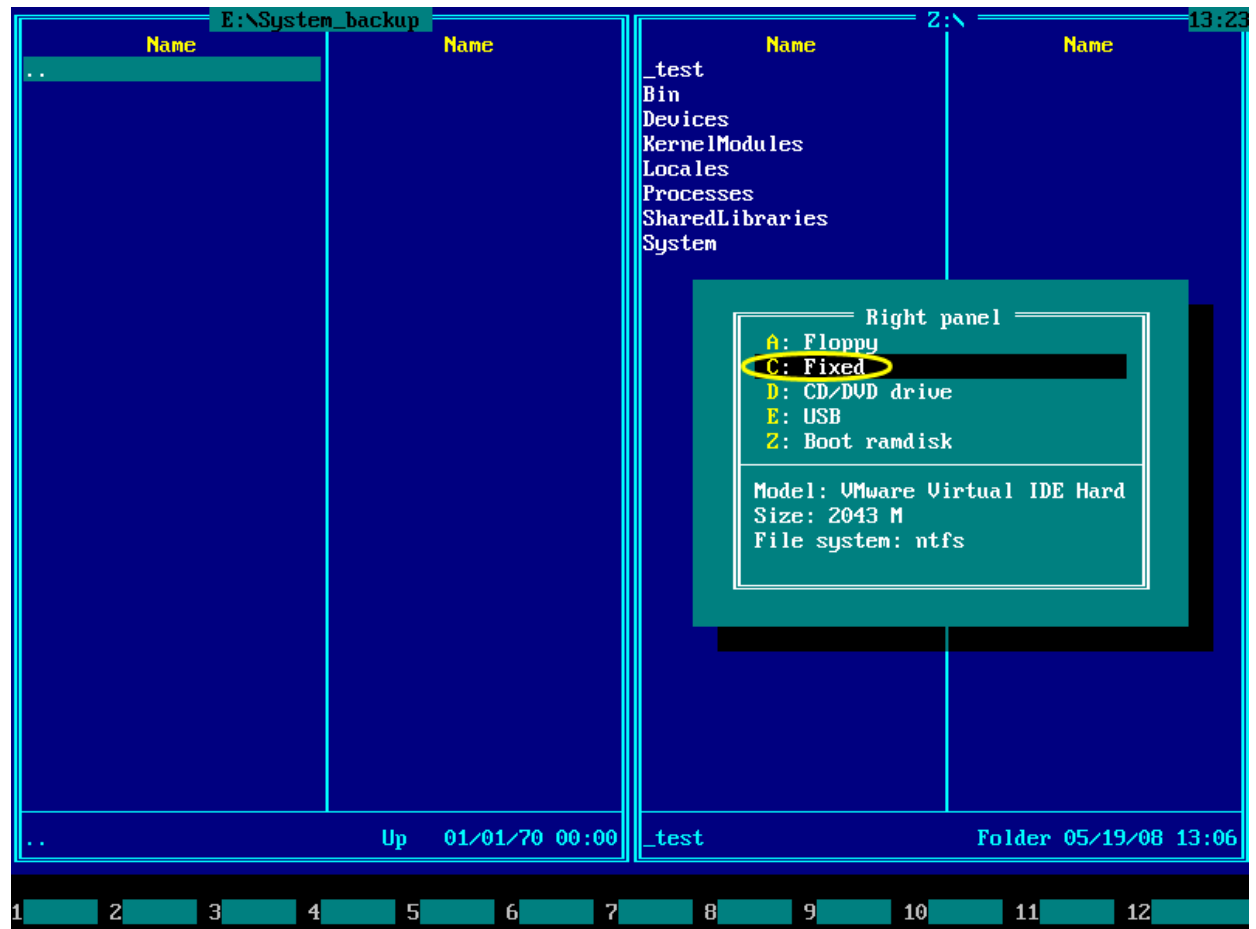


## 2.2. Select files and folders to backup at source drive

In another panel of file manager, choose source drive for backup. Press **Alt+F2** to do this.

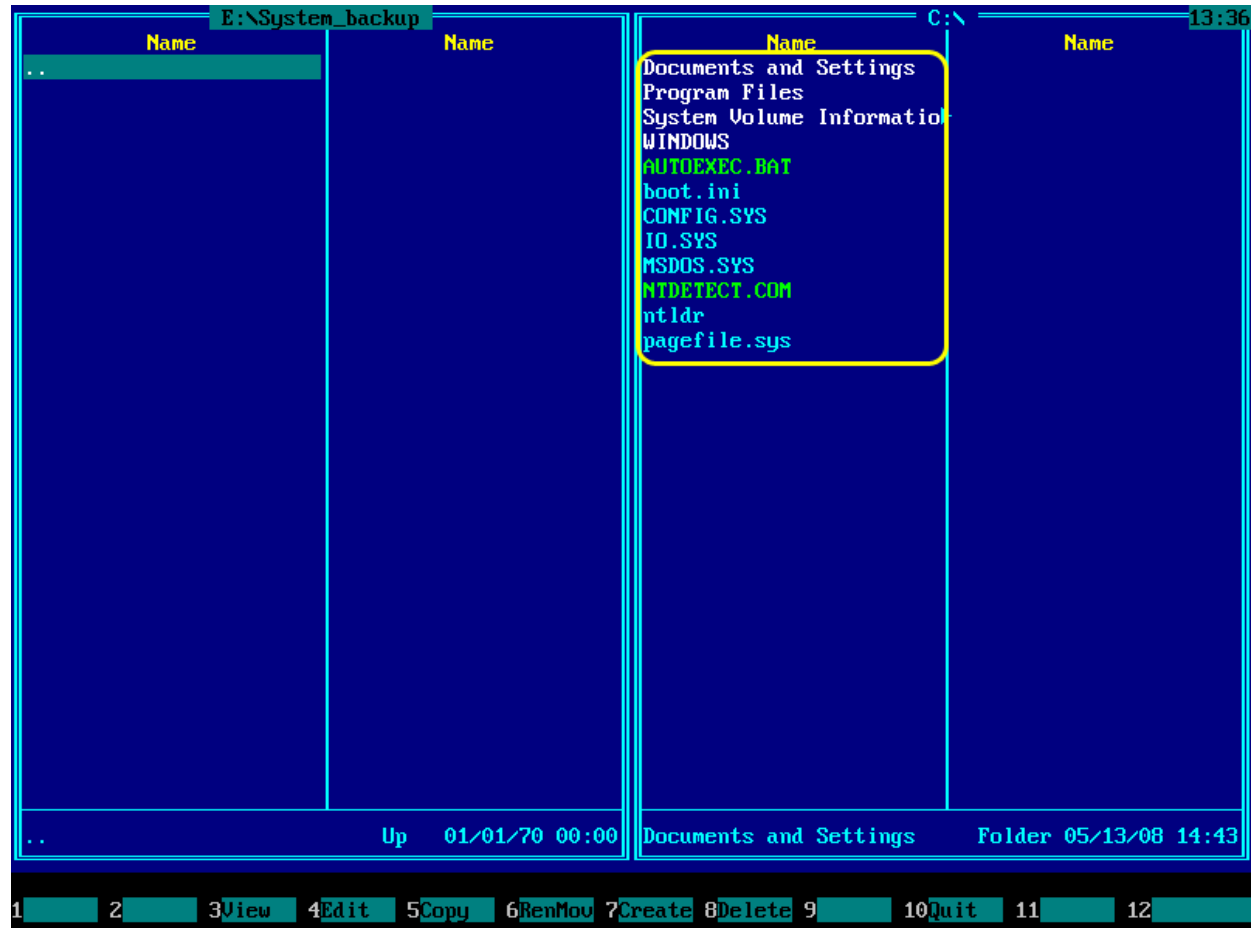
For more information on this topic refer to EBCD user guide volume “Introduction to file manager” ([http://www.prime-expert.com/ebcd/user\\_guide/ebcd\\_file\\_intro.pdf](http://www.prime-expert.com/ebcd/user_guide/ebcd_file_intro.pdf)).

In popup window choose desired drive using ↑ and ↓ keys, then **Enter** or by clicking it. Screenshot shows choosing of drive C:



2.2. Select files and folders to backup at source drive

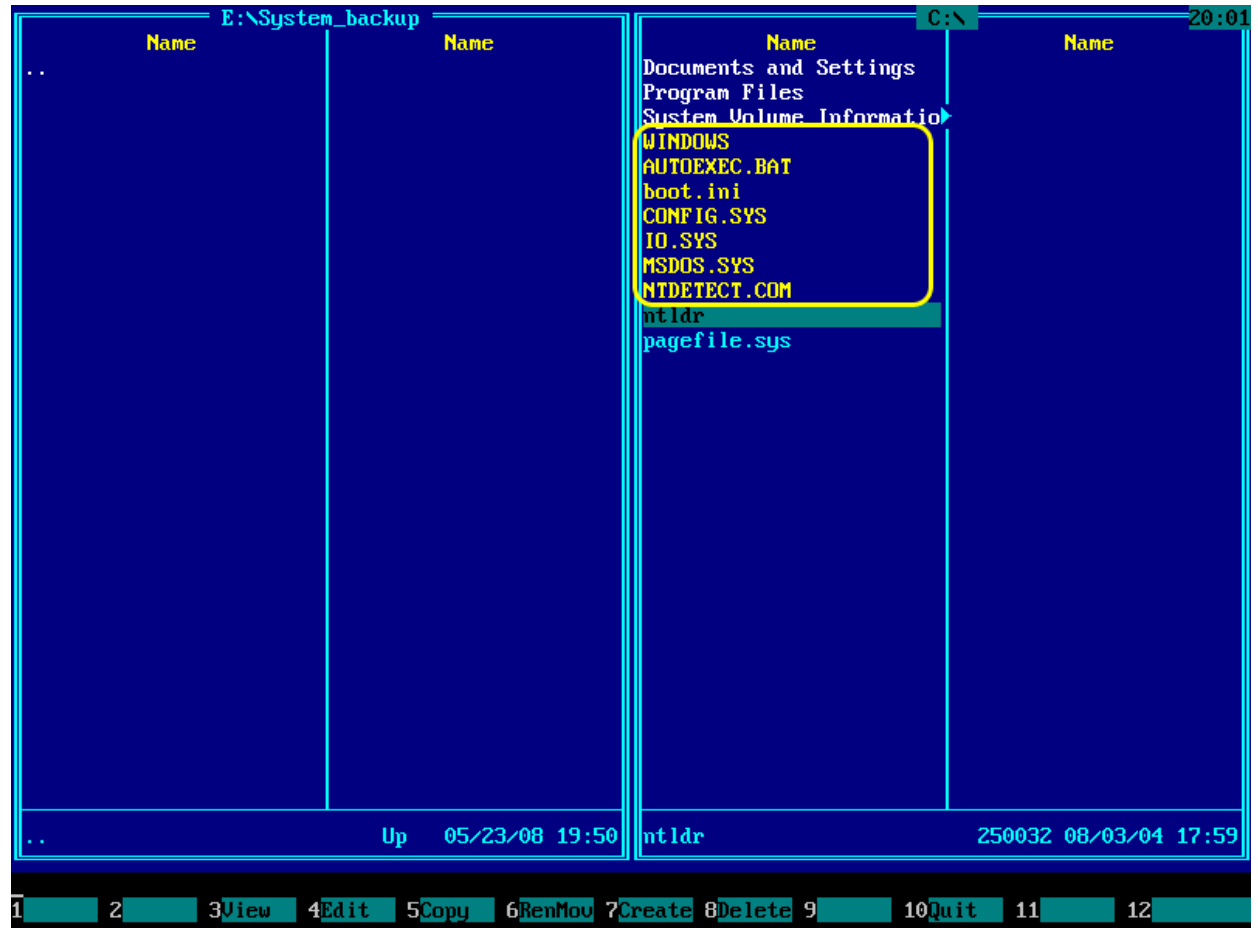
Right panel shows contents of chosen drive.



2.2. Select files and folders to backup at source drive

In example screenshot, right panel shows selected files, ready for backup.

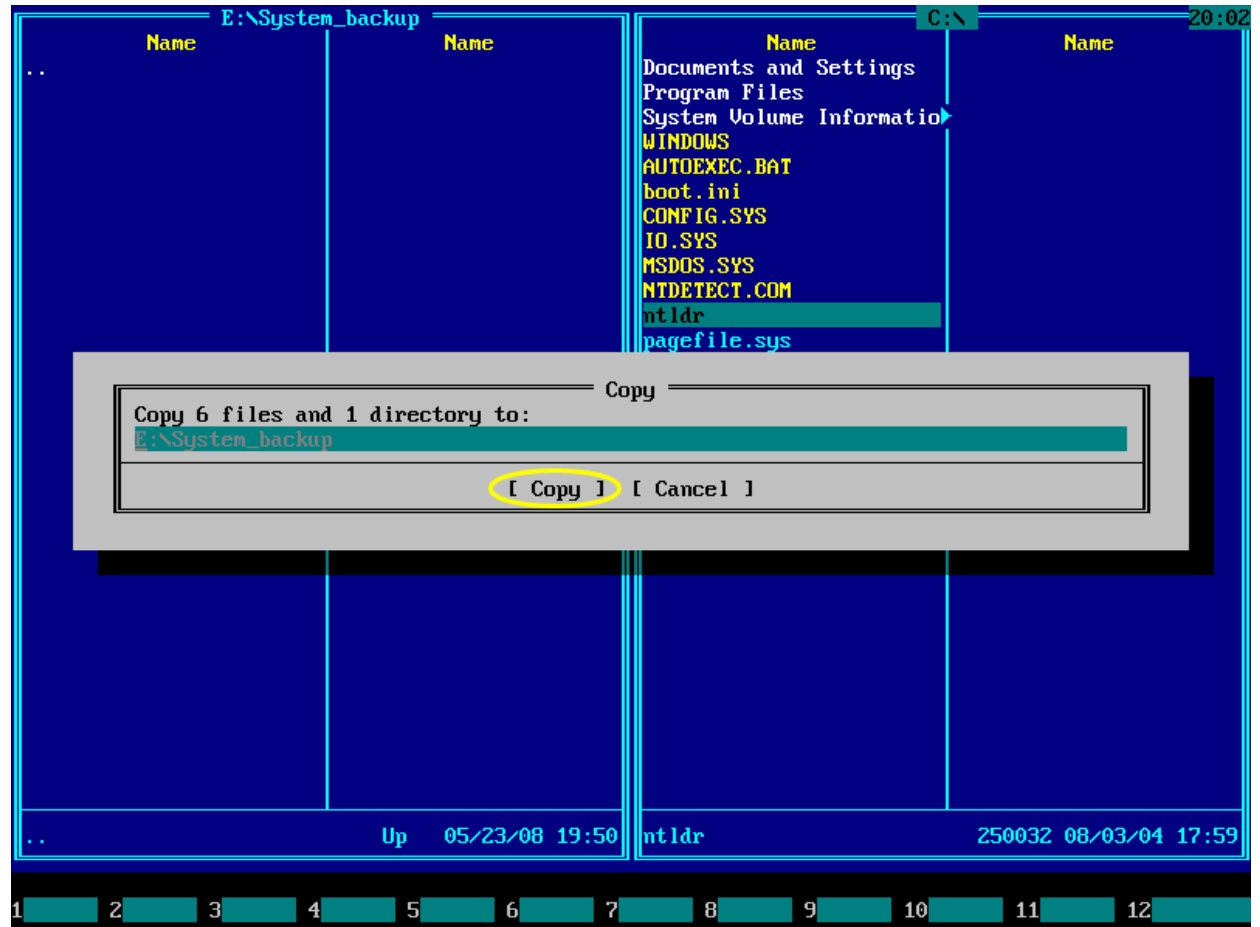
More information about selection files and folders can be found in EBCD user guide volume “Introduction to File Manager” ([http://www.prime-expert.com/ebcd/user\\_guide/ebcd\\_file\\_intro.pdf](http://www.prime-expert.com/ebcd/user_guide/ebcd_file_intro.pdf)).



### 2.3. Start backup process

To copy selected files and folders (right panel of file manager in this example) to destination folder on the backup drive (left panel in this example) press **F5** key, while right panel is active.

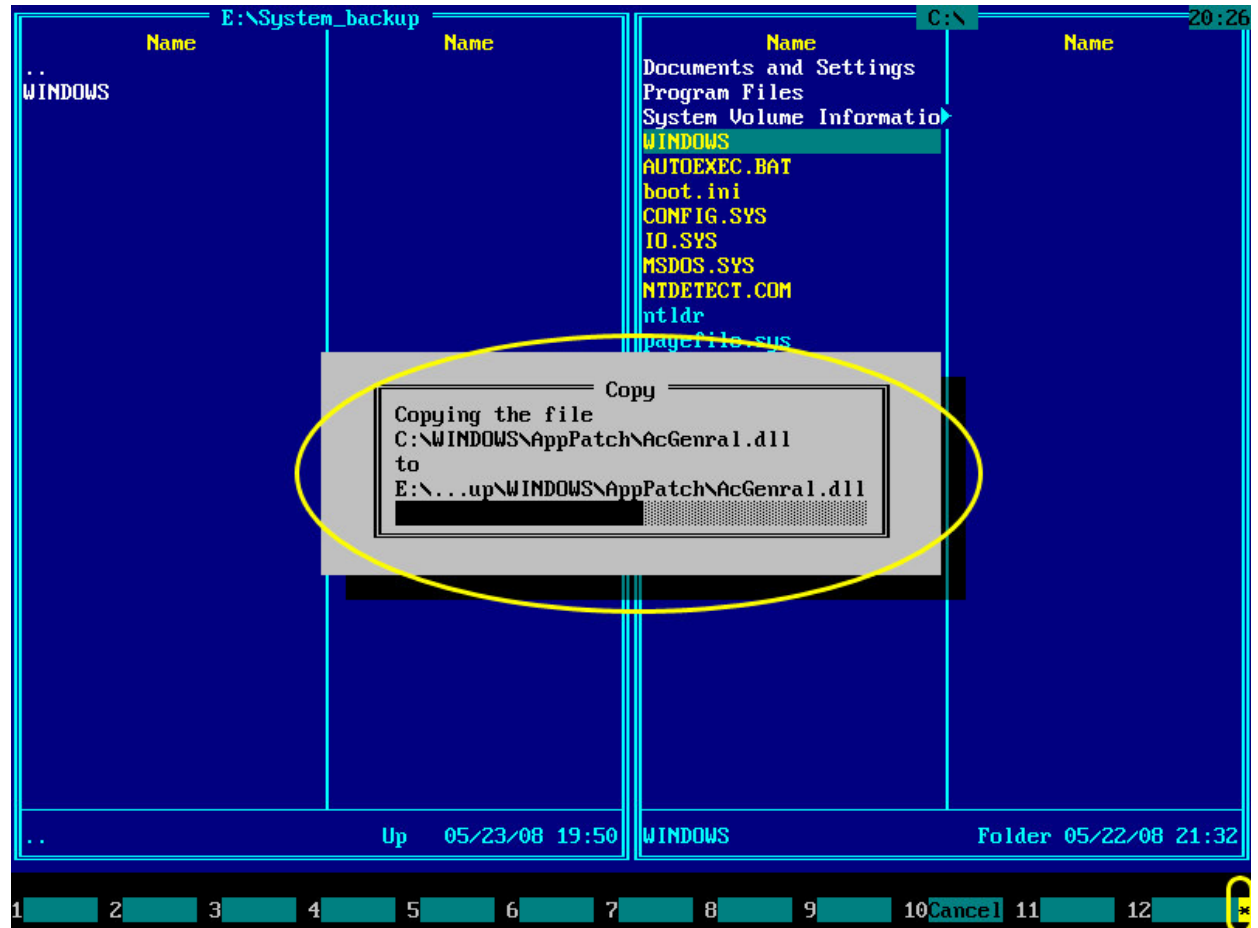
A popup window should occur. Press **Enter** key or click Copy in popup window to confirm target path.



Backup process should start immediately. You should see progress window showing information about files being copied.

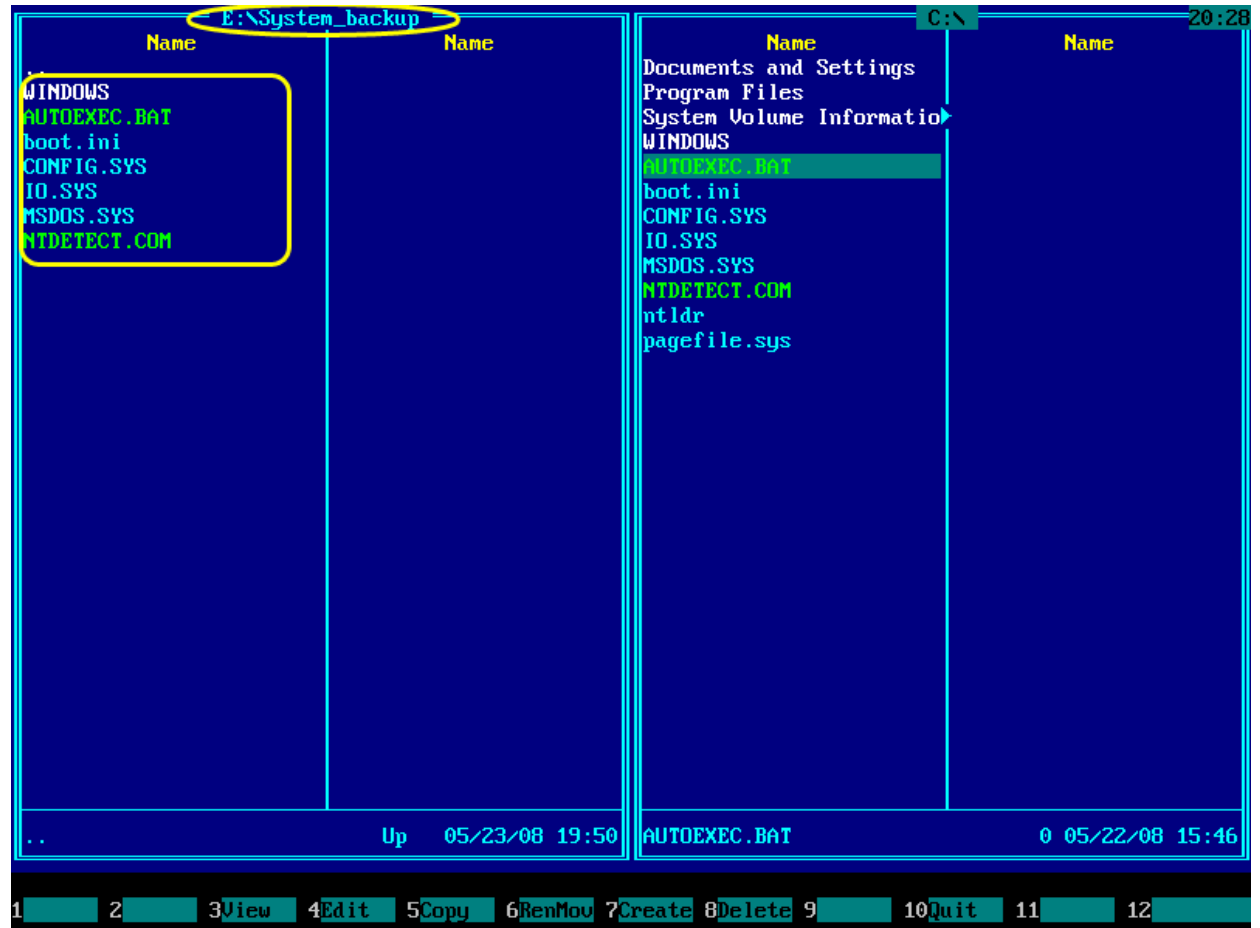
If you backup to removable media, like USB flash, you should see asterisk on yellow background in the right bottom of your screen. Asterisk shows that removable device is in use now and you should not unplug or eject it. Wait until asterisk disappears and then unplug device or eject the disk. If you fail to do so, data loss may occur.

If you want to interrupt file copying, press **F10** or **Esc**.



When copying is finished, progress window disappears.

Screenshot shows contents of System\_backup folder of drive E: after backup.



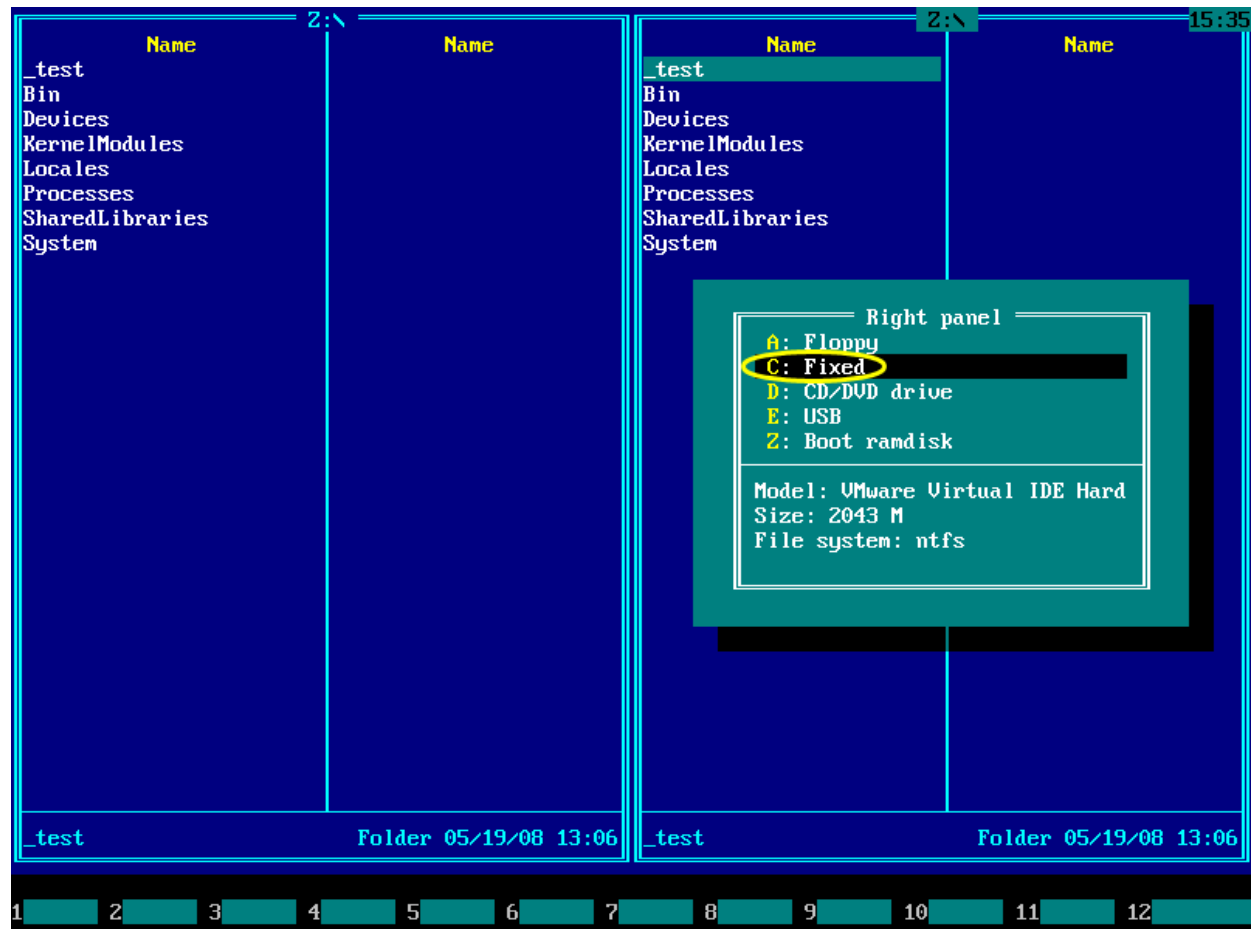
## 3. How to restore files from backup copy

### 3.1. Choose destination folder

Open the drive you are going to restore, in the one of file manager panels. To do this, press **Alt+F2** key.

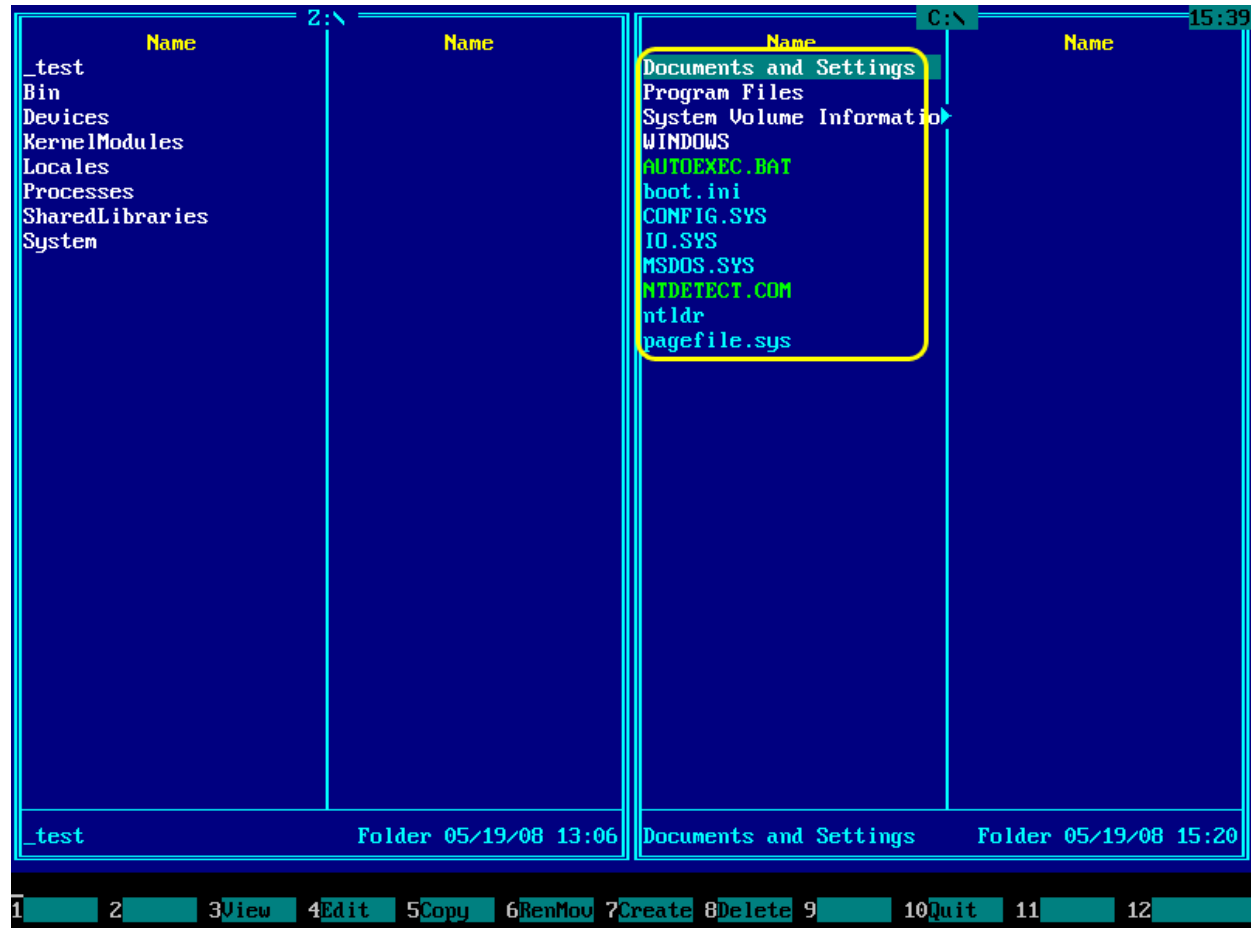
For more information on this topic refer to EBCD user guide volume “Introduction to file manager” ([http://www.prime-expert.com/ebcd/user\\_guide/ebcd\\_file\\_intro.pdf](http://www.prime-expert.com/ebcd/user_guide/ebcd_file_intro.pdf)).

In popup window choose desired drive using ↑ and ↓ keys, then **Enter** or by clicking it. Screenshot shows choosing of drive C:



Right panel shows contents of chosen drive.

If you want to restore not entire drive, but single folder, then enter into it.

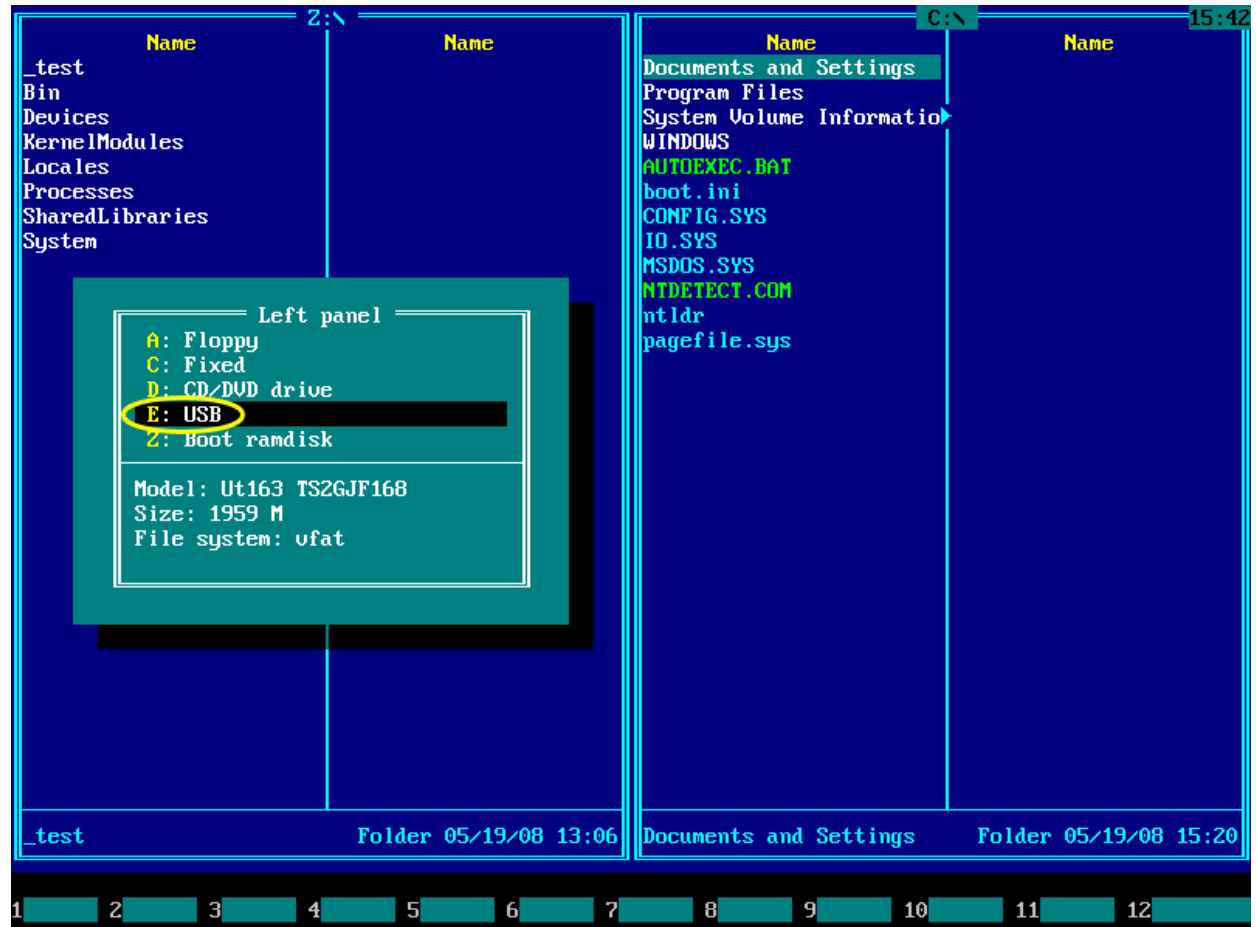


### 3.2. Select files to restore at source drive

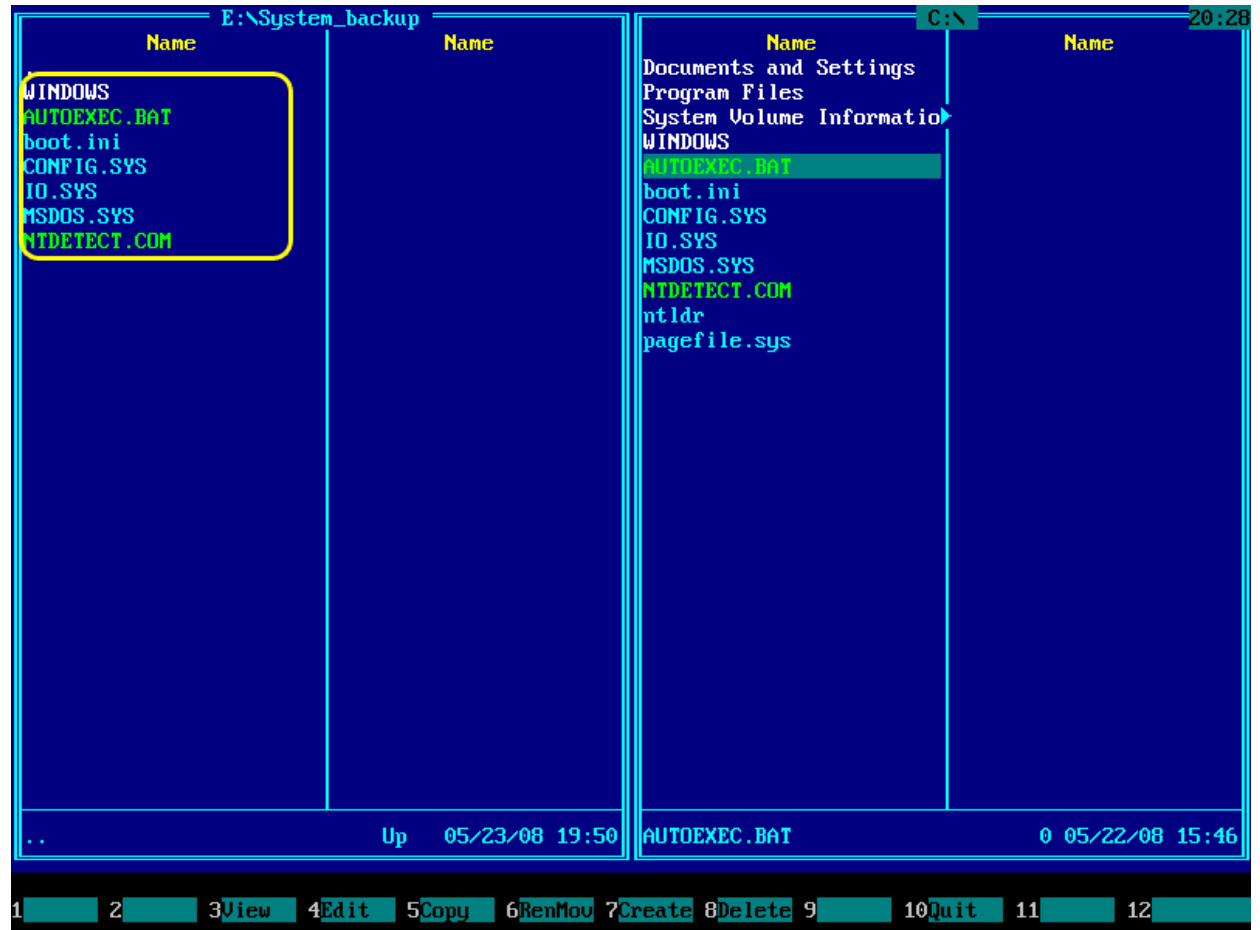
In another panel of file manager, choose source drive for restore. Press **Alt+F1** to do this.

For more information on this topic refer to EBCD user guide volume “Introduction to file manager” ([http://www.primexpert.com/ebcd/user\\_guide/ebcd\\_file\\_intro.pdf](http://www.primexpert.com/ebcd/user_guide/ebcd_file_intro.pdf)).

In popup window choose desired drive using ↑ and ↓ keys, then **Enter** or by clicking it. Screenshot shows choosing of drive E: (USB flash)

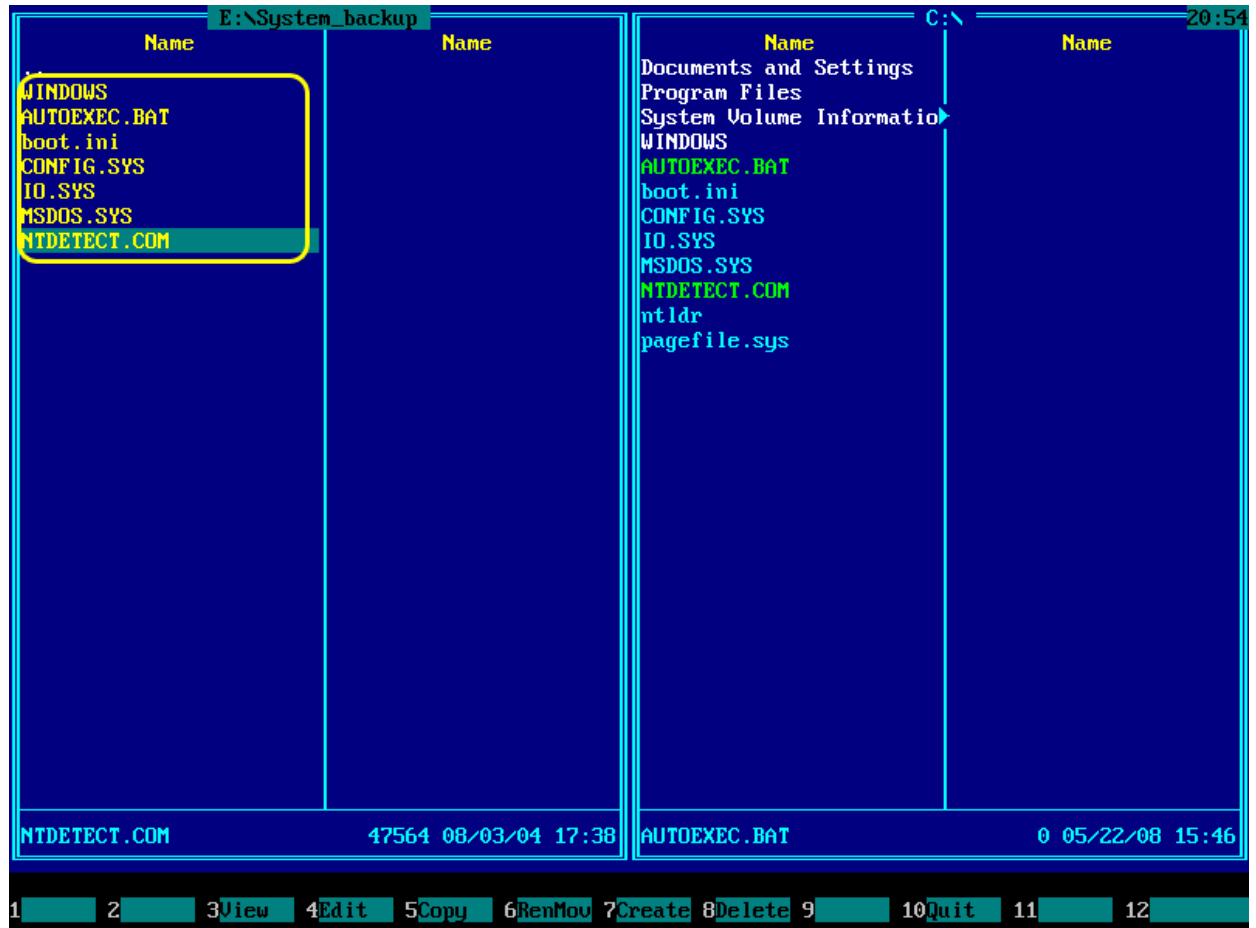


Enter into the folder, where backup files are located. You should have saved them earlier.



Then select files and folders for restore.

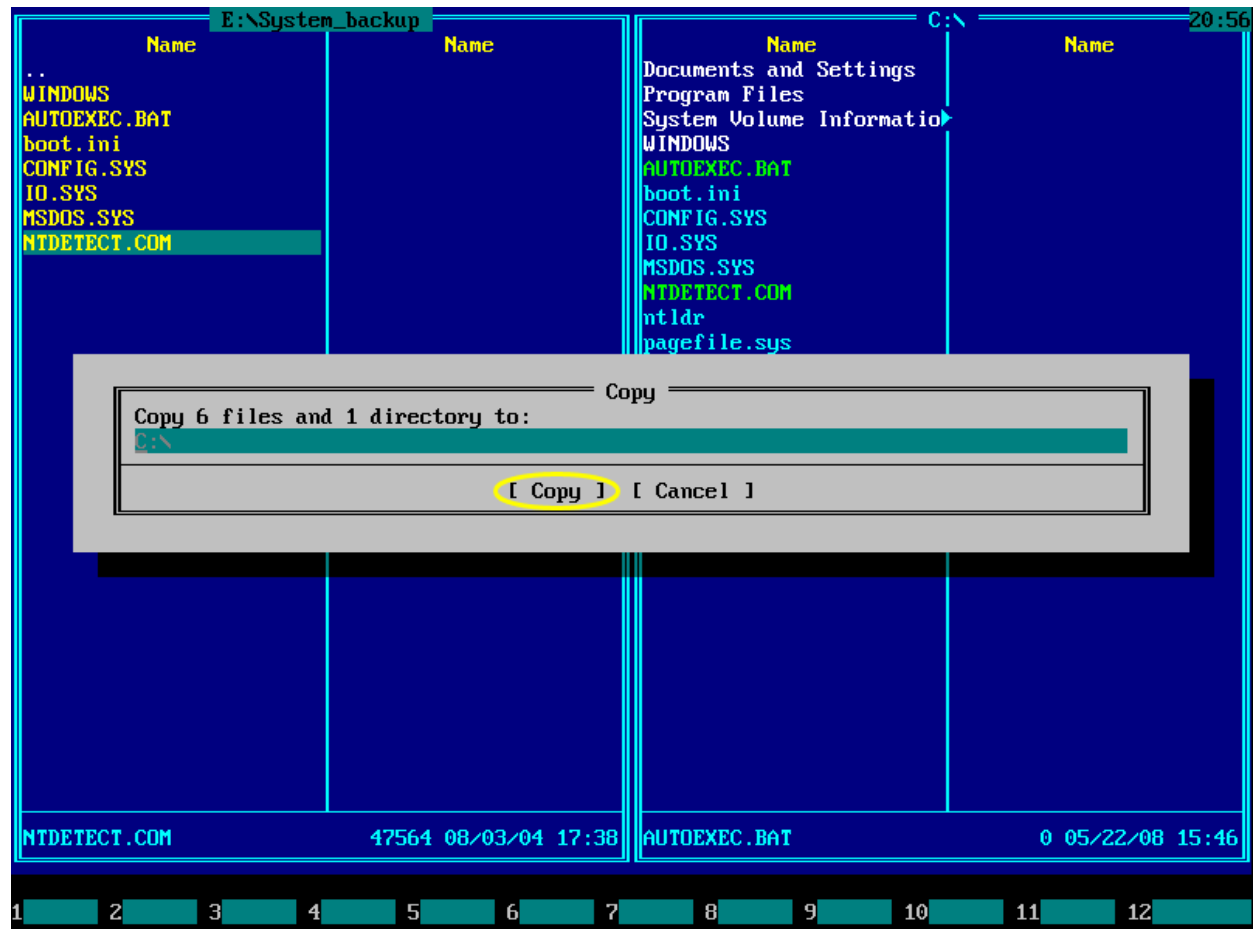
More info on selecting files can be found in EBCD user guide volume "Introduction to File Manager" ([http://www.primexpert.com/ebcd/user\\_guide/ebcd\\_file\\_intro.pdf](http://www.primexpert.com/ebcd/user_guide/ebcd_file_intro.pdf)).



### 3.3. Start restore process

To copy selected files and folders from backup media (left panel of file manager in this example) to target folder on disk (right panel in this example) press **F5** key, while left panel is active.

A popup window should occur. Press **Enter** key or click Copy in popup window to confirm target path.



Restore is in progress.

If one of restored files already exists on destination disk, then popup window will be displayed.

If you choose to **Overwrite**, then current file from backup media will be copied to target disk, and existing version of this file on target disk will be overwritten.

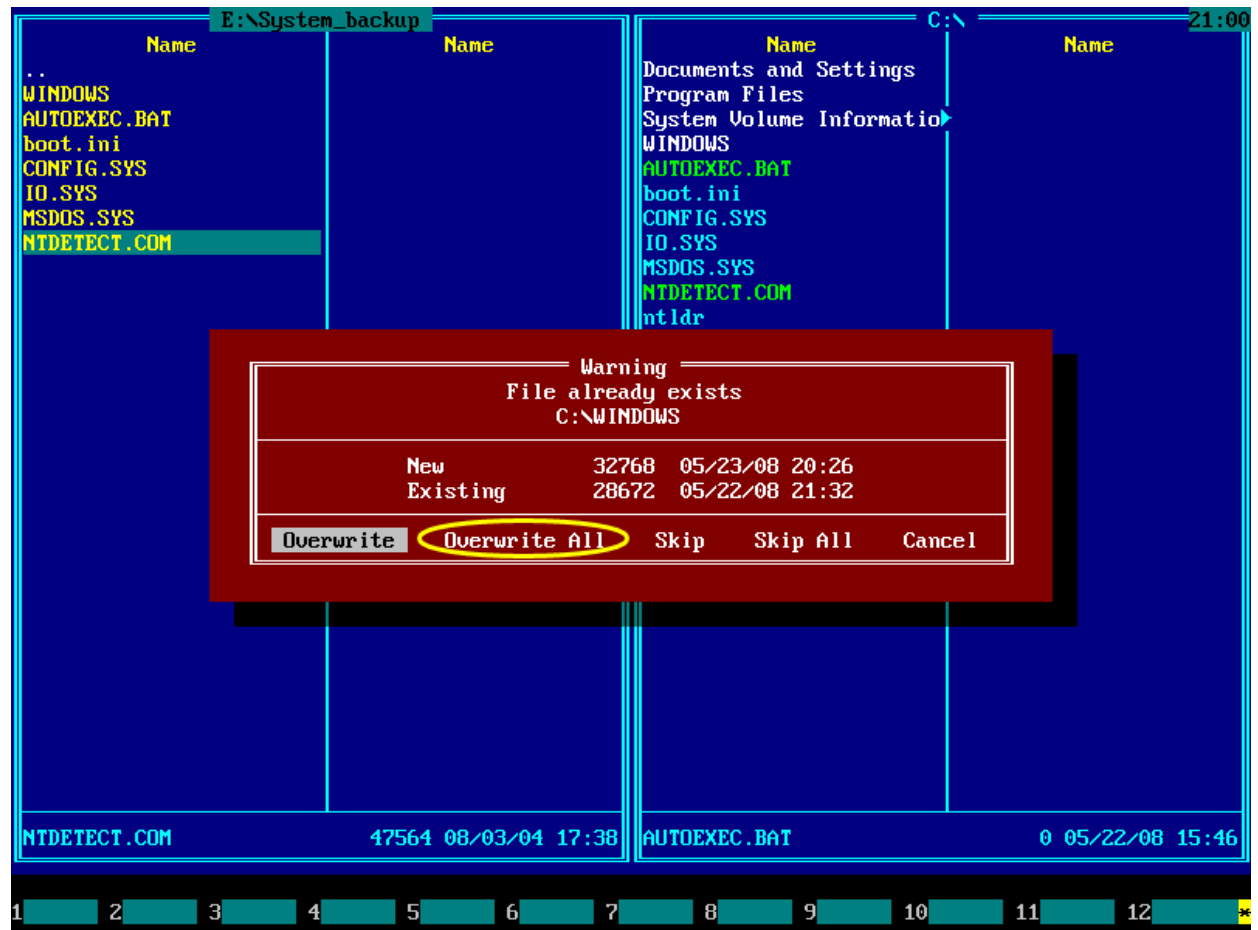
If you choose to **Overwrite All**, then current file and all following files from backup media will be copied to target disk, and existing versions of these files on target disk will be overwritten.

If you choose to **Skip**, then current file will not be copied from backup media to target disk, and existing version of this file on target disk will be kept untouched.

If you choose to **Skip All**, then current file and all following files will not be copied from backup media to target disk, and existing versions of these files on target disk will be kept untouched.

If you choose to **Cancel**, then restoring from backup media will be interrupted. Already restored files will be saved.

In this example, drive C: contains files which have to be restored from drive E:  
So in this example we should choose to **Overwrite All**.



You should see progress window showing information about files being copied.

If you backup to removable media, like USB flash, you should see asterisk on yellow background in the right bottom of your screen. Asterisk shows that removable device is in use now and you should not unplug or eject it. Wait until asterisk disappears and then unplug device or eject the disk. If you fail to do so, data loss may occur.

If you want to interrupt file copying, press **F10** or **Esc**.

When copying is finished, progress window disappears.

