

Windows Password Wizard

Contents

1. How to start.....	2
2. About wizard	3
3. Wizard pages	4
3.1. Page 1	4
3.2. Page 2	5
3.3. Page 3.....	6
3.4. Page 4.....	7
3.5. Page 5.....	8

1. How to start

After booting, EBCD displays its main menu.

To start Windows password wizard, press the **F2** key or click mouse on windows password wizard line.

Emergency Boot CD version 1.1

Registered to:
Email:
Address:
Phone:



2. About wizard

All wizards share the same user interface design principles:

1. To open next wizard page, click **Next >** button.
2. To return to previous wizard page, click **< Back** button.
3. To cancel (exit wizard without applying changes), click **Cancel** button.

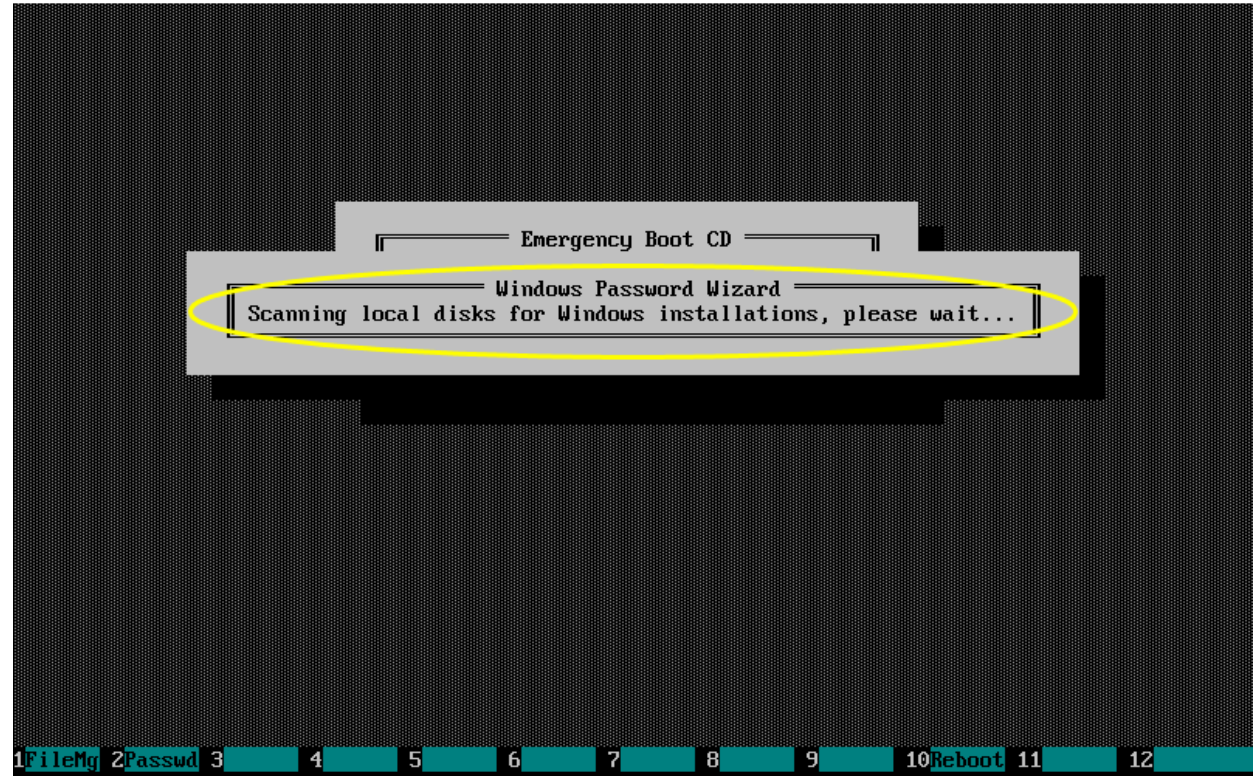
3. Wizard pages

3.1. Page 1

Just after starting the wizard you should see message like one shown on the screenshot. It will automatically disappear after a few seconds.

Emergency Boot CD version 1.1

Registered to:
Email:
Address:
Phone:



3.2. Page 2

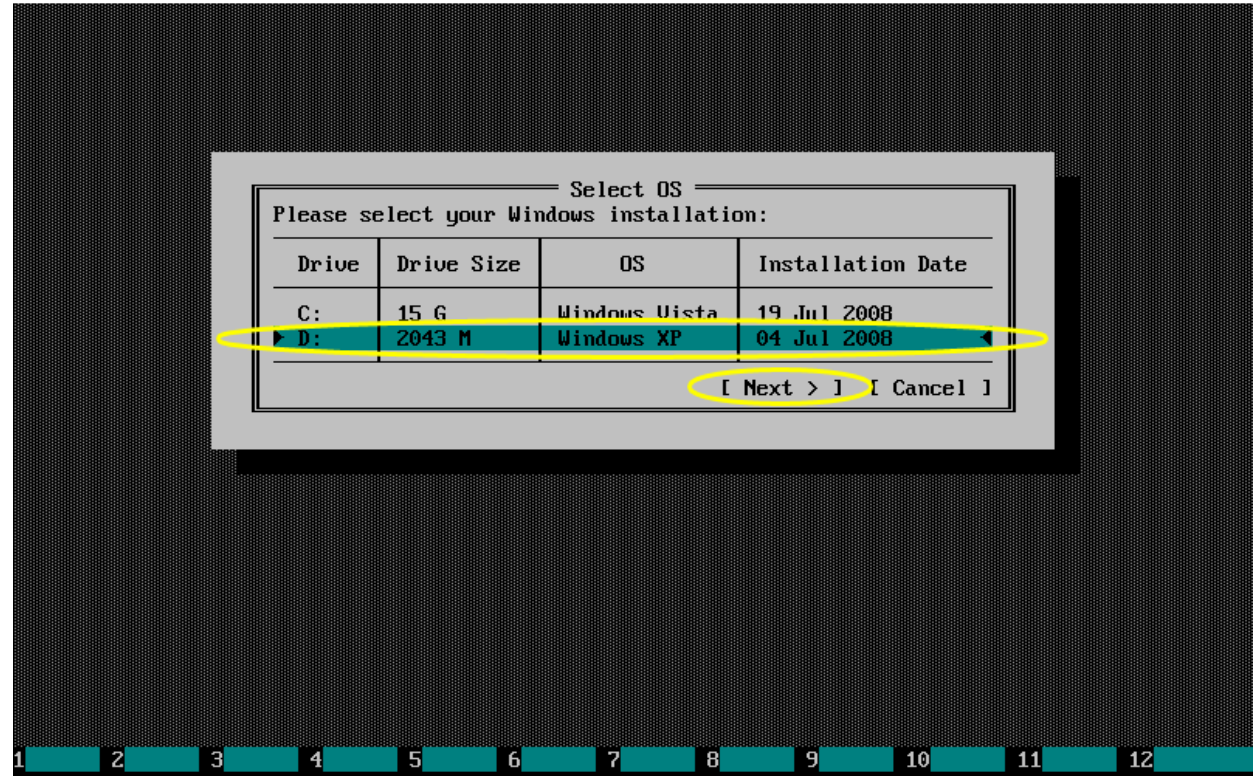
If your PC has multiple Windows installations, then after scanning completion you should see a table, containing a list of all Windows installations.

Please select Windows installation you are going to change password for, using ↑ and ↓ keys, and click Next> button.

If there is only one Windows installation on your PC, then this wizard page is not displayed (wizard automatically skips it to page 3).

Emergency Boot CD version 1.1

Registered to:
Email:
Address:
Phone:



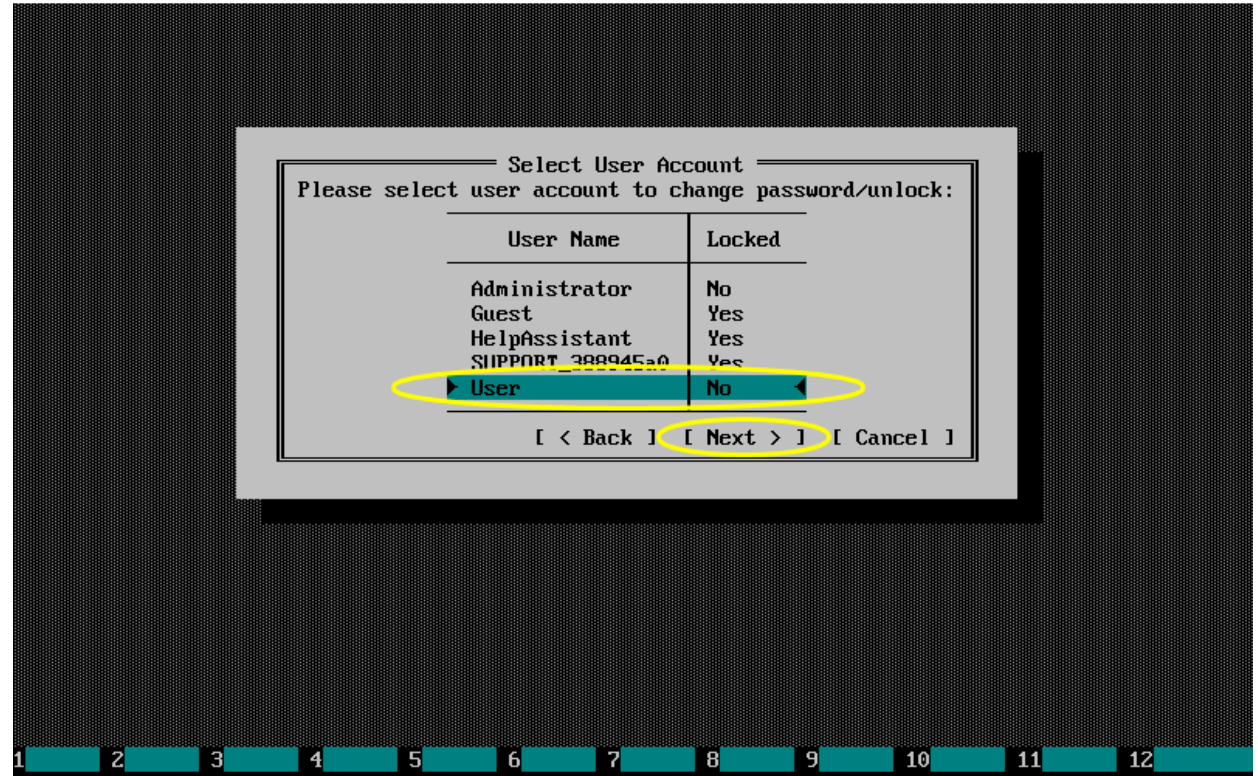
3.3. Page 3

This page displays user account list. For each user account EBCD displays its status: locked or unlocked.

Select user account to change password for (and also optionally unlock) using ↑ and ↓ keys, and click Next> button.

Emergency Boot CD version 1.1

Registered to:
Email:
Address:
Phone:



3.4. Page 4

This wizard page is to enter new password. You may also check target user name and Windows installation here.

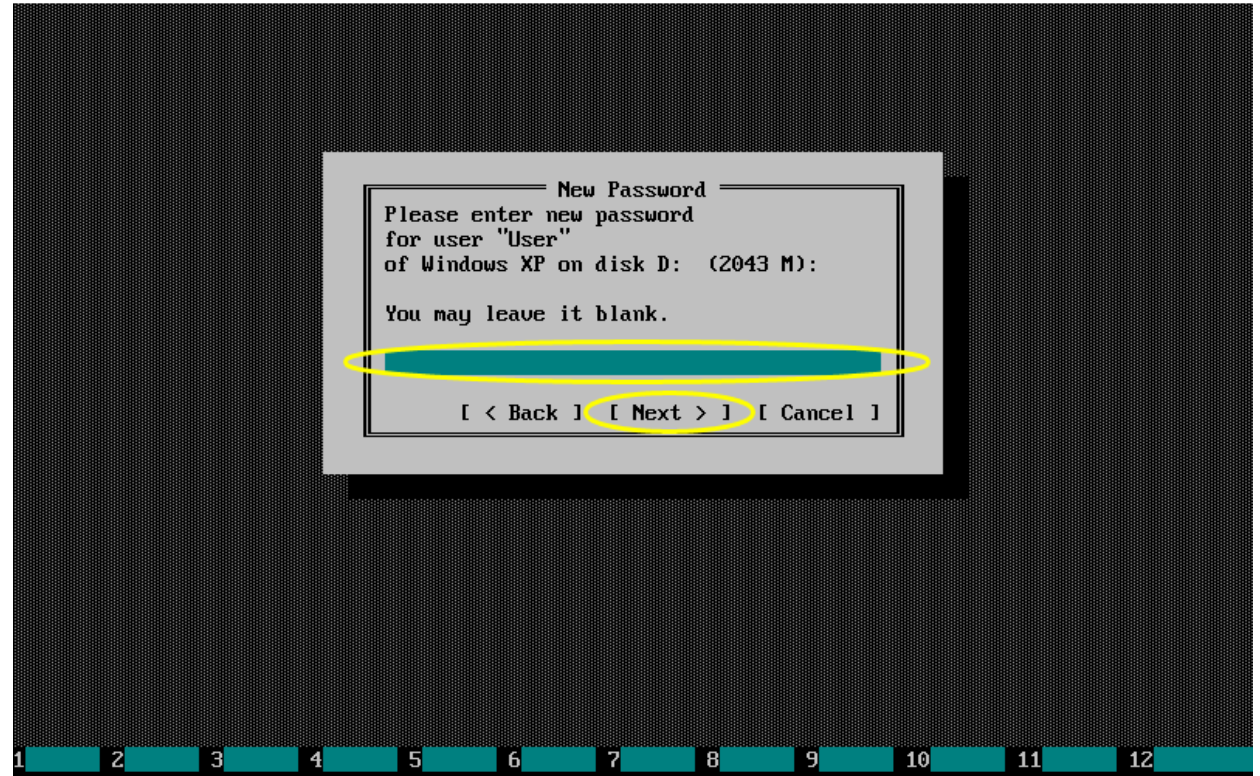
You may set blank password as well.

If account for target user is locked, this page also displays check box labeled "Also unlock this account", checked by default. If you leave it checked, then account will be unlocked. To leave account as is locked, uncheck the check box by clicking it.

Click Next> button to continue.

Emergency Boot CD version 1.1

Registered to:
Email:
Address:
Phone:



3.5. Page 5

This page shows message about either successful password change (in a window with grey background) or some error occurred during this operation (in a window with red background).

To exit wizard, press **Enter** key or click **Finish** button.

Emergency Boot CD version 1.1

Registered to:
Email:
Address:
Phone:

